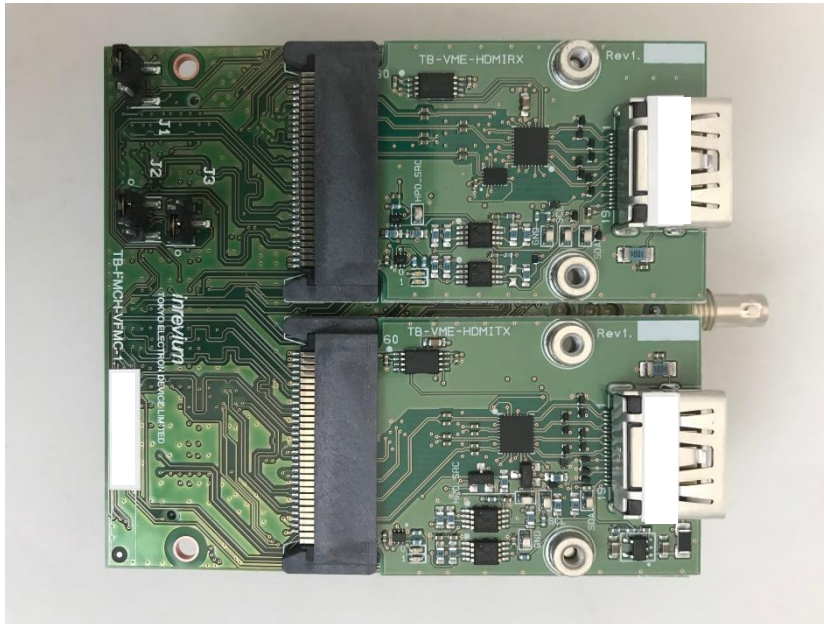


HDMI 2.1 FMC card

PRE ORDER



Features

- HDMI Specification 2.1
- Sink/Source 1ch each (default)
- The board can be customized for 2 x sink or 2x source as design service.

Reference Design

- Working with Xilinx's HDMI 2.1 IP
- Please contact Xilinx (www.xilinx.com) for reference designs for this product

Description

The TB-FMCH-VFMC-HDMI provides test environment of a system compliant with HDMI Specification 2.1 supporting both FRL and TMDS. The board can be customized for two sinks or two sources. The customization is done by Inrevium design service.

Notice: This board is used with Xilinx's HDMI 2.1 IP core. Some functions of the board are not tested because IP does not support them. Questions for the IP core and reference design, please contact to Xilinx (www.xilinx.com) .

Tokyo Electron Device markets proprietary information, technology and services under our original 'inrevium' brand name.

*All product names mentioned are trademarks or registered trademarks of the respective companies [owners].

* Information in this document is subject to change without notice



TOKYO ELECTRON DEVICE AMERICA, INC.

<https://solutions.inrevium.com/>